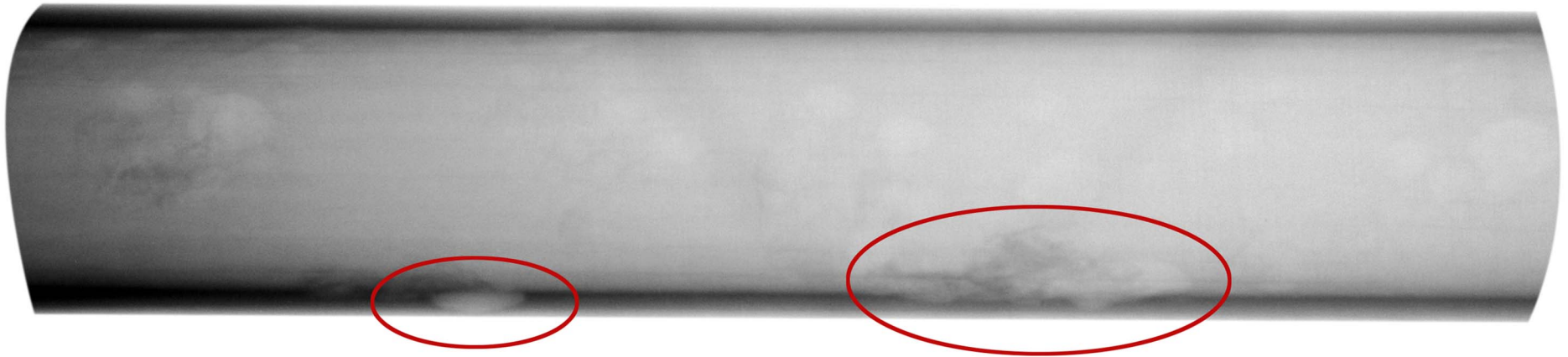


2" galvanized pipe hot
water supply/ horizontal
4-HL/S3
Condition: Poor



- .Pipe wall thickness .180"
- .Pipe wall thickness reduction 45% across the length of the sample
- .Deep pits penetrate the pipe wall
- .One pit penetrates the pipe wall 98%, the second pit penetrates the pipe wall 85%