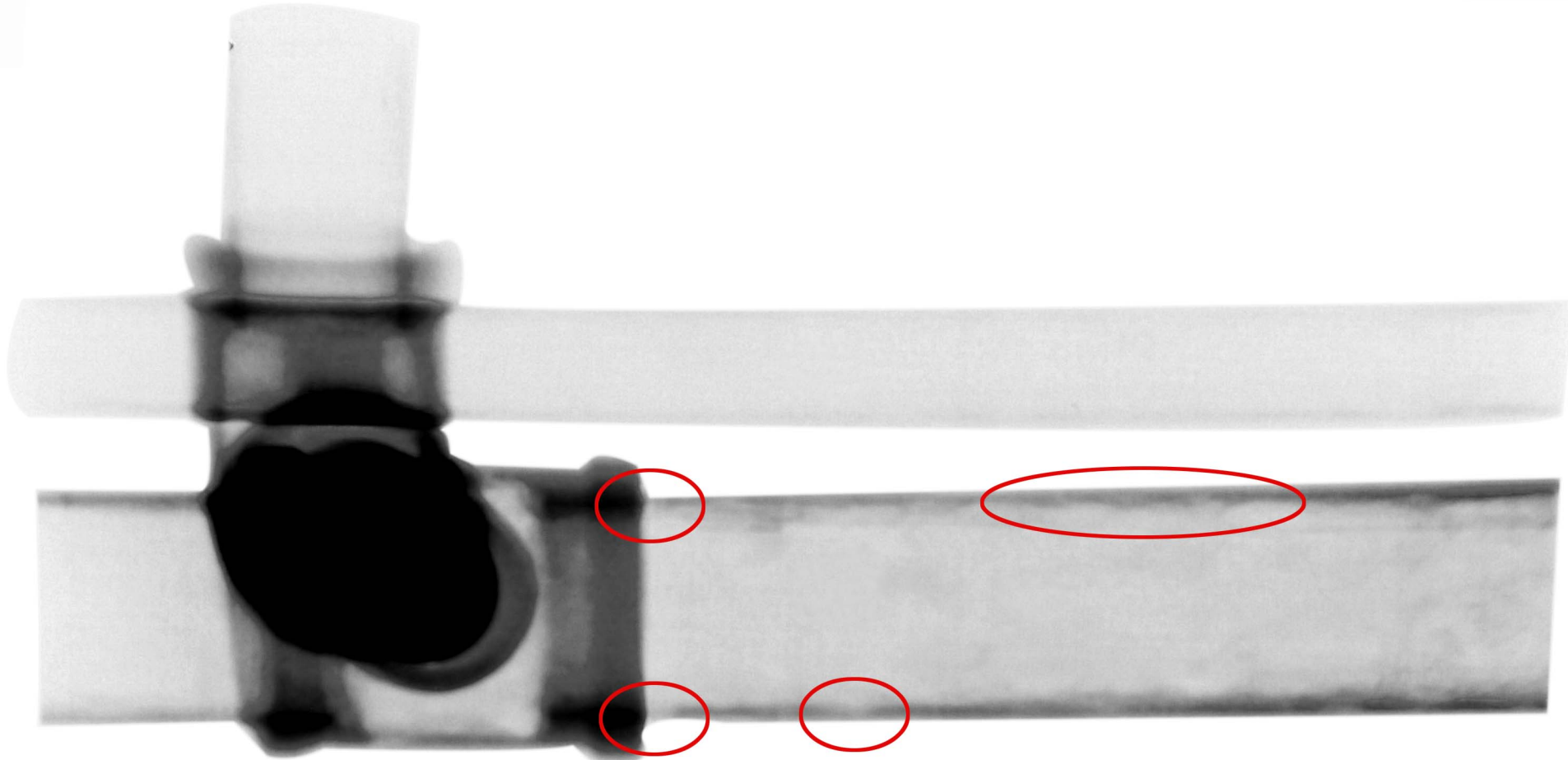


# 1 1/2" diameter galvanized vent pipe



- Severe pitting on the inside pipe wall
- Thinning at the threaded tee fitting (60+%)
- The inside of the pipe is covered with scale mound which takes up 20 to 30% of the interior surface
- The pipe wall is thinned by 80% in some areas...corrosion scale is providing what little wall strength that remains. Any sudden shock such as draining the pipe could cause a thread failure
- Scale has reduced flow by 40%